

Aster Hobby Japan offers the following details....

- 1) Blue X Black version = blue of boiler case will be slightly darker as gun blue than old photo version.
- 2) All boiler band will be separated parts and no 2X square hole of smoke box door for the number plate.
- 3) the position of by-pass valve is different from your old drawing. (please check photo)



(NOTE: axle pump units and all feed water copper tube and by-pass valve for Tiger are included with K2 full option version. So standard version has no by-pass valve)

4) we have 3 different optional parts for this Tiger

A) K2 kit full option version this is painted SBB gray

B) K2 kit (this is just popular freight car for Europe continent. so no water & alcohol tank) painted European brown.

C) detail (these are lost wax parts of 2X Large lamp, 2X lamp stand, 2X lamp stand for rear, 4X small lamp, 4X air hose: Customer needs to make holes for fixing these details'.)







SBB Tigerli E 3/3

Basic version locomotives (any color)

- No axel pump
- No dummy lamps rear or front
- No dummy air hoses rear or front
- No bypass valve
- Yes, feed water pipe
- No boiler water tank (boiler must be filled with customer provided water pump connected to water line under cab floor.
- Yes, Alcohol tank provided inside cab of locomotive.

● Fully equipped locomotive (any color)

- Yes, Axel pump
- No dummy lamps rear or front
- No dummy air hoses rear or front
- Yes, bypass valve
- Yes, feedwater pipe
- No alcohol tank !

Locomotive detail kit (optional for any color kit)

- 3 x front dummy lamps
- 3 x rear dummy lamps
- 2 x front dummy air hoses
- 2 x rear dummy air hose
- Locomotive number plates
- Lamps are black and must be painted by customer.

K2 utility car full option (grey color only)

- Removable roof
- • Water tank with hand pump installed (like old trackside pump)
- Removable alcohol tank installed
- Alcohol sump and fuel line installed

- Feed water line and connectors installed
- Decals must be applied by customer
- Car is assembled and painted.

Rolling stock version (brown color only)

- Removable roof
- No water tank
- No water pump
- No Alcohol tank
- No plumbing
- Decals must be applied by customer

Car is assembled and painted, decals must be applied by customer

The Aster pilot model was introduced at the Paris Model Train Expo (12/5/15) by Aster Europe.

Designed as a switcher engine, these standard gauge locomotives were used by the Swiss Federal Railways (SBB) on main and branch line operations. The SBB operated 83 units. All of them were built by the Swiss Locomotive Works (SLM) in Winterthur between 1902 and 1915. Nicknamed "Tigerli" (Swiss German for "Tiger Cub") these 2 cylinder engines with saturated steam boilers proved to be very dependable and remained in regular service until 1966.

Several locomotives were sold to private industrial works and served there for many more years. Weighing in at 35 tons (including 4.2 tons of water and 1.7 tons of coal). Their operational speed limit was 45 Km/Hr. (some were modified to operate at 50 Km/Hr.)

Due to coal shortage in Switzerland during world War 2, two locomotives were converted to raise steam by electric water heating. This required a pantograph on the cab roof, transformers and electric heating elements inside the boiler. Although this worked well, both engines were eventually converted back to coal firing.



Specifications for SBB E3/3 Tiger (Std version)

| | |
|--------------------------------|---|
| Gauge | 1:32 Gauge 1, (45mm) |
| Wheel Arrangement | 0-3-0 (C-Kuppler) |
| Total Length | 272 mm |
| Width | 94 mm |
| Height | 124 mm |
| Weight Dry | Lokomotive 1,5 kg |
| Cylinder | 2 Cylinders (Cylinder Bore 12 mm × Stroke 17 mm) |
| Main Driving Wheel | Ø 32,5 mm |
| Valve Gear | Walschaert type |
| Lubrication | Roscoe displacement type |
| Axle Driven Pump | Optional, Bore / Stroke 5 x 6 mm |
| Fuel content | 80 cm ³ |
| Boiler | C-Type Boiler with 5 smoke tubes |
| Boiler Capacity | 100 ml (90% full) |
| Normal Working Pressure | 3.5 kg/ cm ² |
| Burner | 2 tube ceramic wick burner |
| Operation Devices | 2 Safety Valves, Water Level Gauge, Pressure Gauge, Regulator Valve, Blower Valve, Reverser Handle |
| Minimum Turning Radius | 1,2 m (4 feet) |

Utility car type SBB K2 Style

Aster Hobby is also planning a suitable utility car K2 as supply wagon for alcohol and water in order to increase the running time considerably.

| | |
|---------------------------------|---------------------------|
| Scale/Gauge | 1/32 Gauge one |
| Weight | 1 kg (dry condition) |
| Length | 250 mm |
| Width | 90 mm |
| Height | 120 mm |
| Wheel Arrangement Driving Wheel | 130 mm Tender Truck Wheel |

Axle Driven Pump

Fitted with by pass valve and water (copper) tubes for SBB E3/3 Tiger

Cylinder Valve Gear Boiler Type

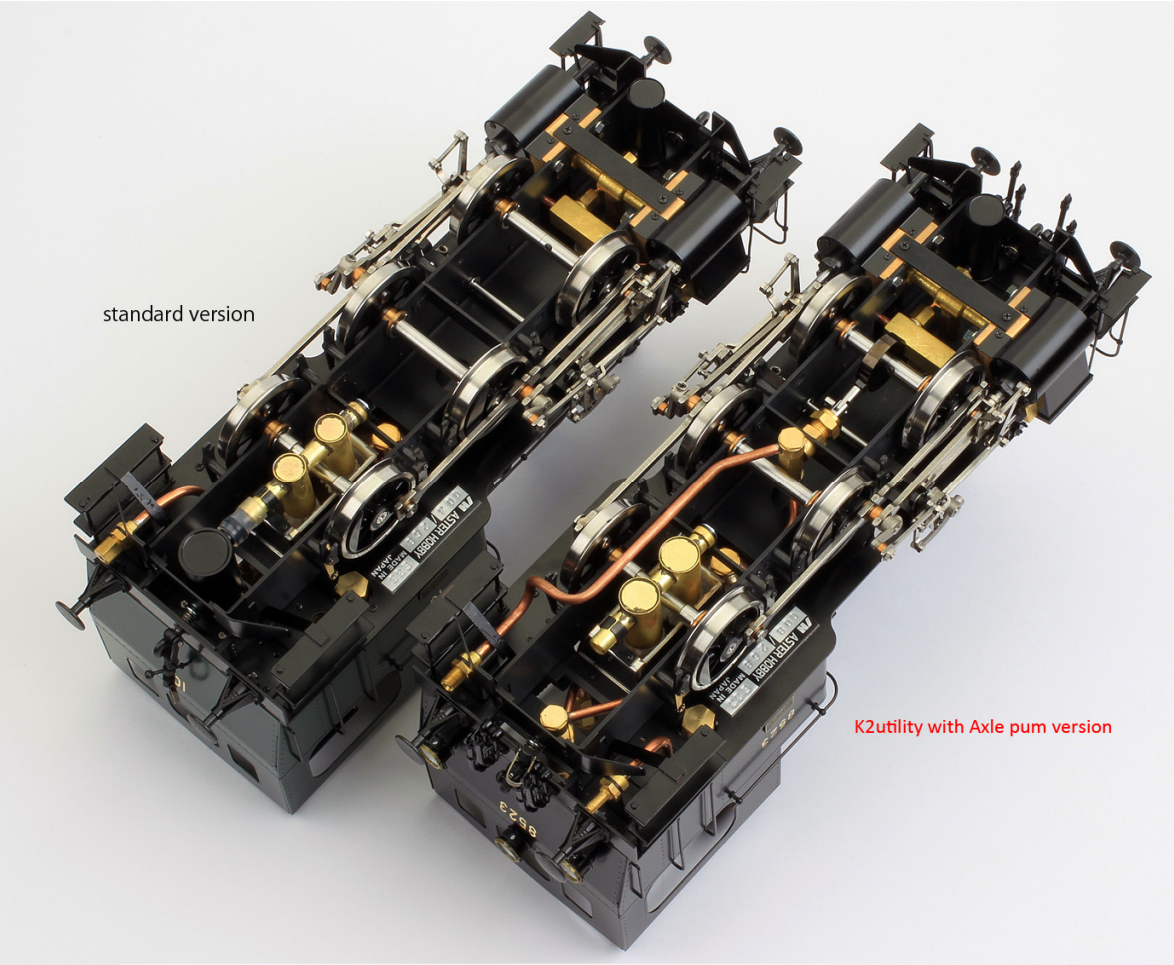
Water Capacity Boiler Fittings Lubricator Tender

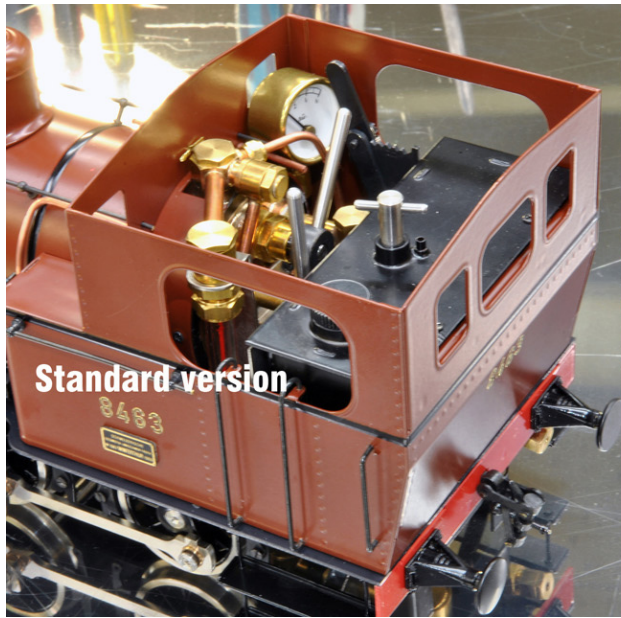
Water Tank Capacity

300cc (stainless)

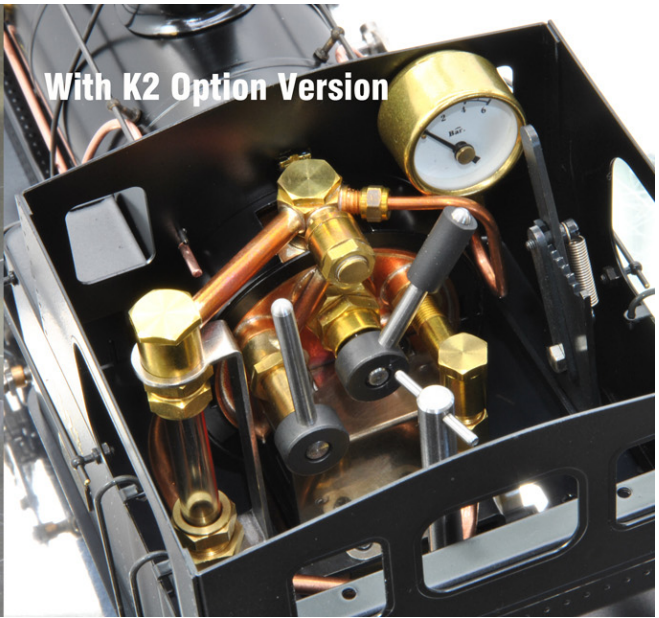
Fuel

125cc (Fuel tank removable) Fuel Capacity

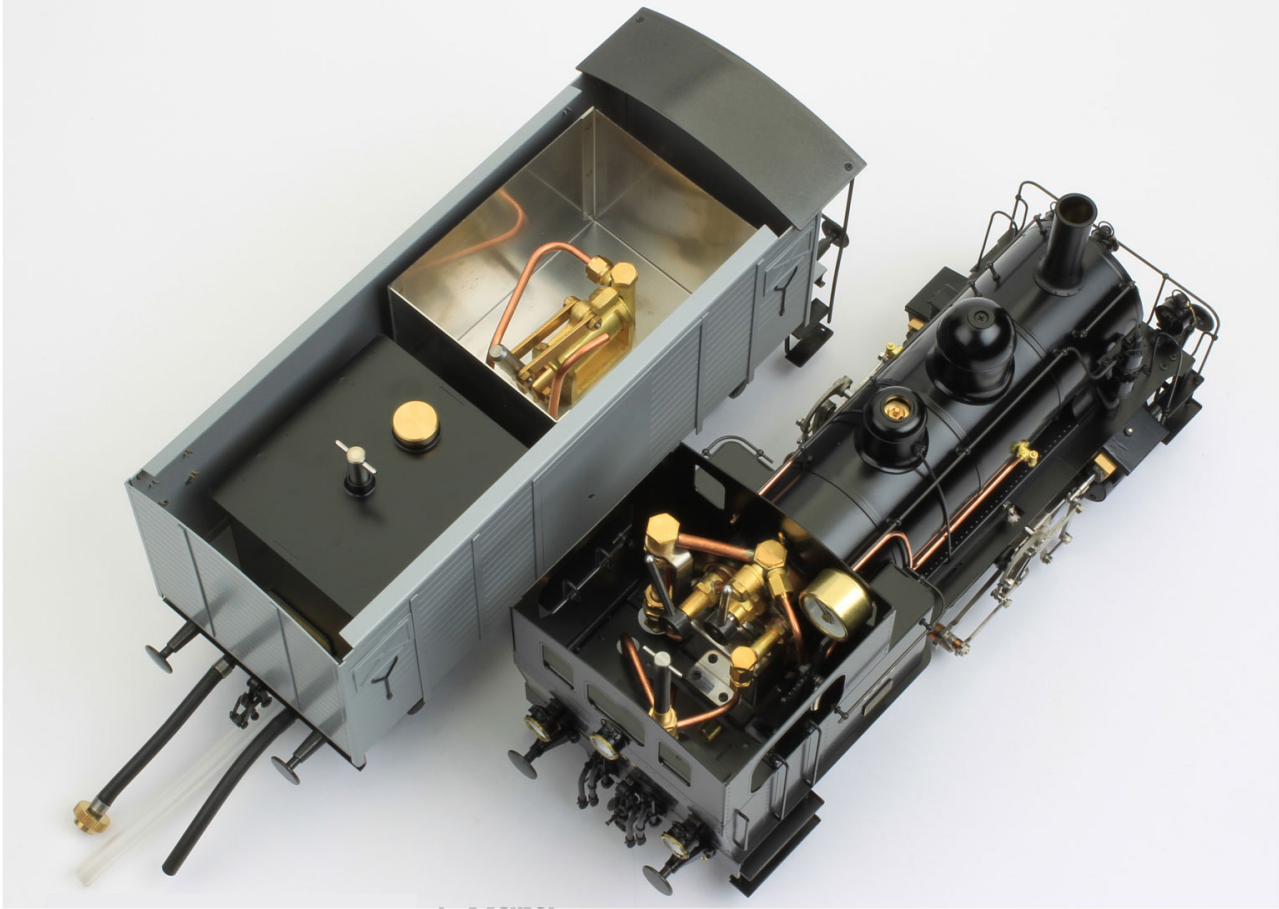




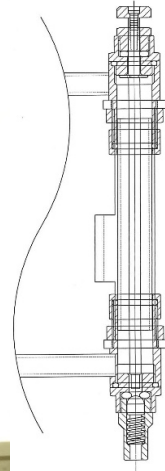
Standard version



With K2 Option Version



Drain valve option



Detail option

